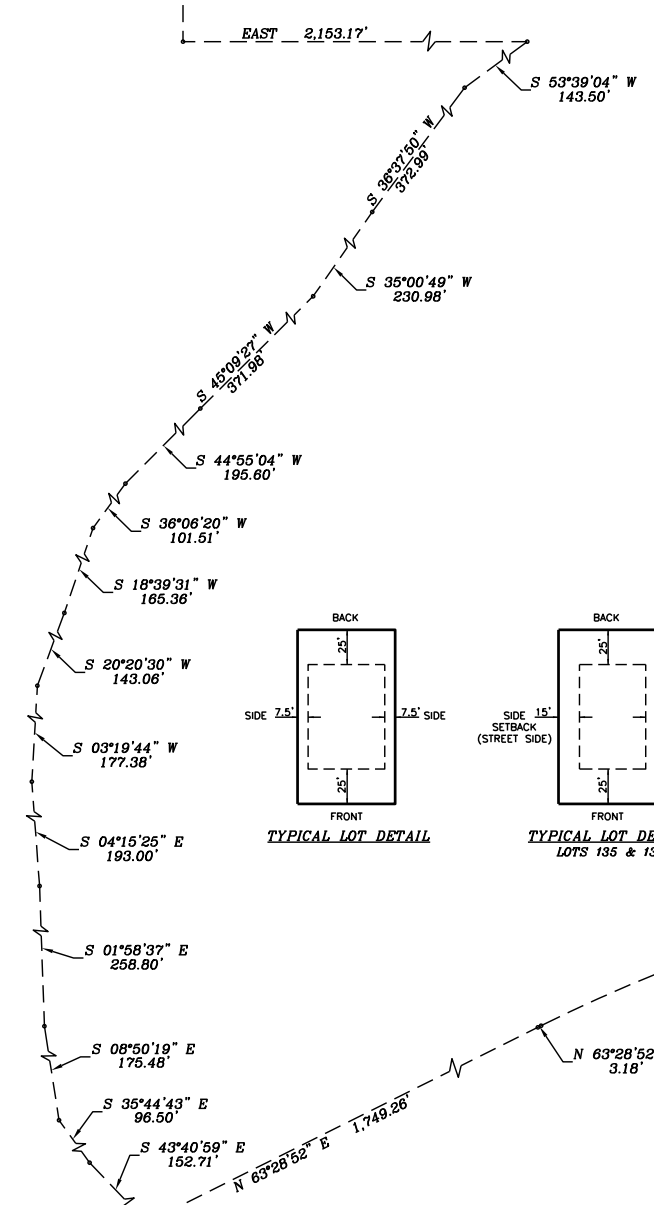
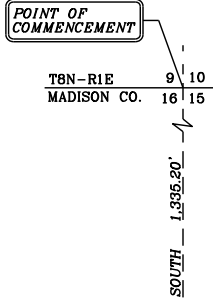
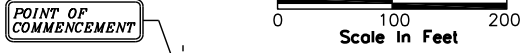
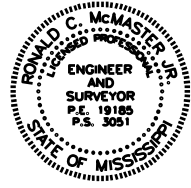


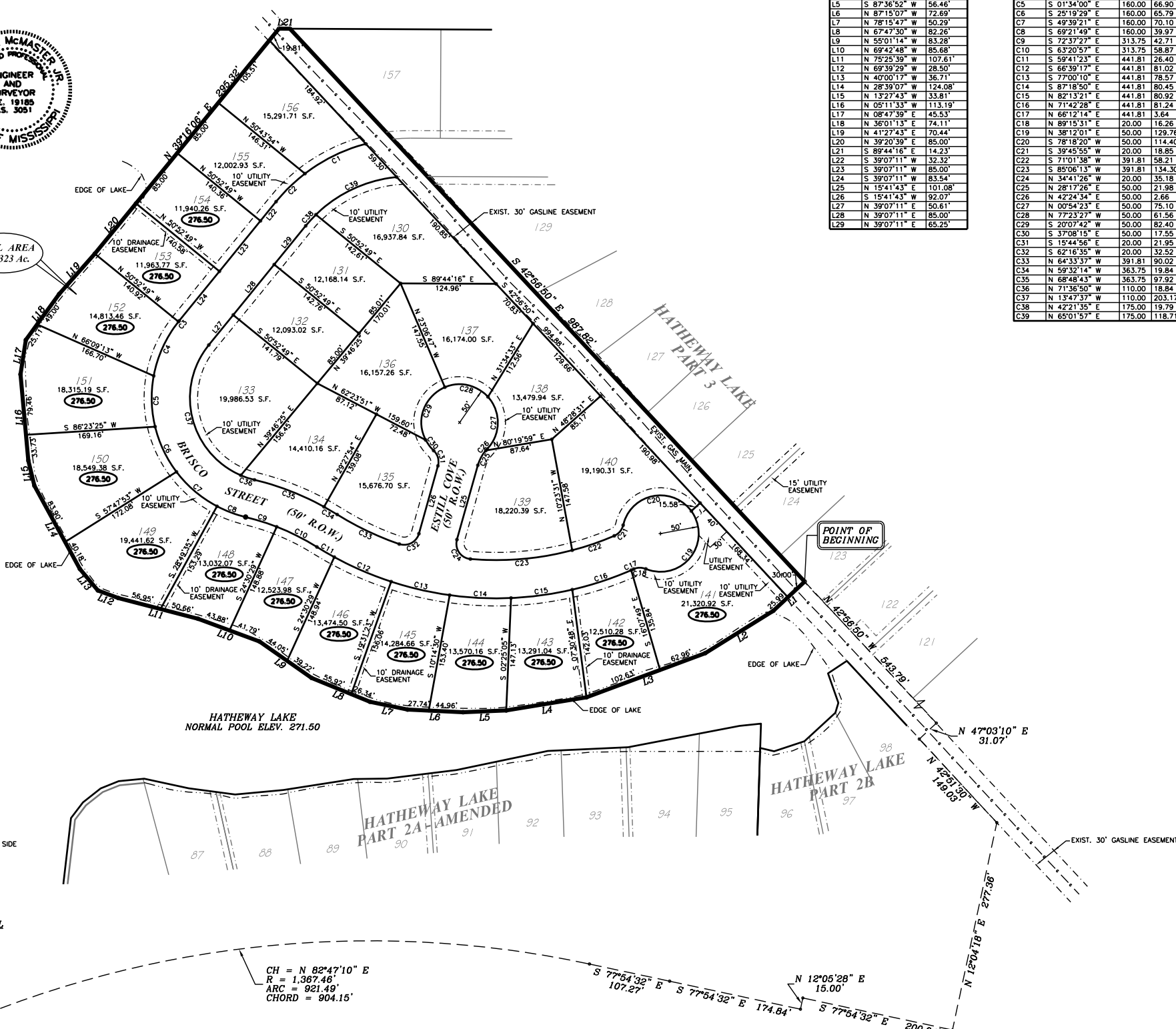
HATHEWAY LAKE PART 4

SITUATED IN THE NE 1/4 OF SECTION 15,
T8N-R1E, MADISON COUNTY, MISSISSIPPI

Class "B" Survey
Bearings Based on Survey
Grade GPS Observations
Taken February 9, 2009
Our Job No. M-1768-3
Date of Survey: December 7, 2011
Date Prepared: October 3, 2013
Scale: 1"=100'
Iron Pin (1/2"x18" Iron Rebar)
276.50 Minimum Finished Floor Elevation



TOTAL AREA
= 11,932.3 Ac.



LINE TABLE

NUMBER	LINE BEARING	DISTANCE
L1	S 47°03'10" W	55.89'
L2	S 58°06'03" W	104.97'
L3	S 69°35'48" W	165.59'
L4	S 80°43'37" W	106.23'
L5	S 87°36'52" W	56.46'
L6	N 87°15'07" W	72.69'
L7	N 78°15'47" W	50.29'
L8	N 67°47'30" W	82.26'
L9	N 55°01'14" W	83.28'
L10	N 69°42'48" W	85.68'
L11	N 75°25'39" W	107.61'
L12	N 69°39'29" W	28.50'
L13	N 40°00'17" W	36.71'
L14	N 28°39'07" W	124.08'
L15	N 13°27'43" W	33.81'
L16	N 05°11'33" W	113.19'
L17	N 08°47'39" E	45.53'
L18	N 36°01'33" E	74.11'
L19	N 41°27'43" E	70.44'
L20	N 39°20'39" E	85.00'
L21	S 89°44'16" E	14.23'
L22	S 39°07'11" W	32.32'
L23	S 39°07'11" W	85.00'
L24	S 39°07'11" W	83.54'
L25	N 15°41'43" E	101.08'
L26	S 15°41'43" W	92.07'
L27	N 39°07'11" E	50.61'
L28	N 39°07'11" E	85.00'
L29	N 39°07'11" E	65.25'

CURVE TABLE

NUMBER	CHORD DIRECTION	RADIUS	ARC LENGTH	CHORD LENGTH
C1	S 63°54'24" W	225.00	89.11	88.52
C2	S 45°50'26" W	225.00	52.78	52.66
C3	S 38°51'29" W	160.00	1.46	1.46
C4	S 24°30'13" W	160.00	78.71	77.92
C5	S 01°34'00" E	160.00	66.90	66.41
C6	S 25°19'29" E	160.00	65.79	65.33
C7	S 49°39'21" E	160.00	70.10	69.54
C8	S 69°21'49" E	160.00	39.97	39.87
C9	S 72°37'27" E	313.75	42.71	42.68
C10	S 63°20'57" E	313.75	58.87	58.78
C11	S 59°41'23" E	441.81	26.40	26.40
C12	S 66°39'17" E	441.81	81.02	80.90
C13	S 77°00'10" E	441.81	78.57	78.47
C14	S 87°18'50" E	441.81	80.45	80.34
C15	N 82°13'21" E	441.81	80.92	80.80
C16	N 71°42'28" E	441.81	81.24	81.13
C17	N 66°12'14" E	441.81	3.64	3.64
C18	N 89°15'31" E	20.00	16.36	15.82
C19	N 38°12'01" E	50.00	129.76	96.29
C20	S 78°18'20" W	50.00	114.40	91.03
C21	S 39°45'55" W	20.00	18.85	18.16
C22	S 71°01'38" W	391.81	58.21	58.16
C23	S 85°06'13" W	391.81	134.30	133.65
C24	N 34°41'26" W	20.00	35.18	30.81
C25	N 28°17'26" E	50.00	21.98	21.81
C26	N 42°24'34" E	50.00	2.66	2.66
C27	N 00°54'23" E	50.00	75.10	68.23
C28	N 77°23'27" W	50.00	61.56	57.74
C29	S 20°07'42" W	50.00	82.40	73.39
C30	S 37°08'15" E	50.00	17.55	17.46
C31	S 15°44'56" E	20.00	21.95	20.87
C32	S 62°16'35" W	20.00	32.52	29.05
C33	N 64°33'37" W	391.81	90.02	89.83
C34	N 59°32'14" W	363.75	19.84	19.84
C35	N 68°48'43" W	363.75	97.92	97.62
C36	N 71°36'50" W	110.00	18.84	18.82
C37	N 13°47'37" W	110.00	203.17	175.50
C38	N 42°21'35" E	175.00	19.79	19.78
C39	N 65°01'57" E	175.00	118.71	116.44

CH = N 82°47'10" E
R = 1,367.46'
ARC = 921.49'
CHORD = 904.15'

FIRE HYDRANT ELEVATION TABLE

FH NO.	ARROW ON FLANGE
FH	X

NOTES:
This is to certify that this property is located in Zone "X", special flood hazard area, which is defined as "areas determined to be outside the 500-year floodplain", according to F.I.A. Community Panel No. 28089C0395F, Madison Co., MS, dated March 17, 2010.
Iron pins at lot corners as shown on this plot. Field work meets or exceeds the requirements for a Class "B" survey.
10' offset corners were set on the rear of lots 141-154 where monument fell in water's edge.



212 WATERFORD SQUARE
SUITE 300
MADISON, MS 39110
601.605.1090

HATHEWAY LAKE PART 4

SITUATED IN THE NE 1/4 OF SECTION 15,
T8N-R1E, MADISON COUNTY, MISSISSIPPI

SURVEYOR'S CERTIFICATE OF COMPLIANCE STATE OF MISSISSIPPI COUNTY OF MADISON

I, Ronald C. McMaster, Jr., Professional Engineer and Surveyor, do hereby certify that the monuments and markers shown hereon are in place on the ground and the plot and plan shown and described hereon are a true and correct representation of a survey to the accuracy designated in the subdivision regulations for Madison County, Mississippi.

Witness my signature this the _____ day of _____, 2013.

Ronald C. McMaster, Jr., Professional Engineer and Surveyor

CERTIFICATE OF COMPARISON STATE OF MISSISSIPPI COUNTY OF MADISON

We, Arthur Johnston, Chancery Clerk and Ronald C. McMaster, Jr., Professional Engineer and Surveyor, do hereby certify that we have carefully compared this plot of HATHEWAY LAKE PART 4, with the original thereof, as made by Ronald C. McMaster, Jr., Professional Engineer and Surveyor, and find it to be a true and correct copy of said map or plot.

Given under my hand and seal of office this the _____ day of _____, 2013.

Ronald C. McMaster, Jr., P.E., P.S. Arthur Johnston, Chancery Clerk

By: _____ D.C.

ACKNOWLEDGMENT STATE OF MISSISSIPPI COUNTY OF MADISON

Personally appeared before me, the undersigned officer in and for the jurisdiction aforesaid, the within named Ken A. Primos, Jr., who acknowledged to me that he is Vice-President of Hatheway Lake, LLC, a Mississippi Limited Liability Company, who acknowledged to me that he signed and delivered this plot and the certificates thereon, for and on behalf of, said Hatheway Lake, LLC, as its act and deed, after being authorized so to do, and Ronald C. McMaster, Jr., Professional Engineer and Surveyor, who acknowledged to me that he signed and delivered this plot and the certificates thereon as his own act and deed, on the day and year herein mentioned.

Given under my hand and seal of office this the _____ day of _____, 2013.

By: _____ D.C.
Arthur Johnston, Chancery Clerk

FILING AND RECORDATION STATE OF MISSISSIPPI COUNTY OF MADISON

I, Arthur Johnston, Chancery Clerk in and for said County and State, do hereby certify that the final plot of HATHEWAY LAKE PART 4 was filed for record in my office on this the _____ day of _____, 2013, and was duly recorded in Plot Cabinet _____ at Slide _____ of the records of maps and plats of land in Madison County, Mississippi.

Given under my hand and seal of office this the _____ day of _____, 2013.

By: _____ D.C.
Arthur Johnston, Chancery Clerk

COUNTY ENGINEER'S RECOMMENDATION STATE OF MISSISSIPPI COUNTY OF MADISON

I have examined this plot and find it conforms to all conditions set forth on the preliminary plot as approved by the Board of Supervisors of Madison County, Mississippi and thus recommend final approval.

By: _____
Rudy M. Warnock, Jr., P.E.
Madison County Engineer

APPROVAL OF THE BOARD OF SUPERVISORS STATE OF MISSISSIPPI COUNTY OF MADISON

I hereby certify that this is a true copy and that this plot was approved by the Board of Supervisors of Madison County in session on the _____ day of _____, 2013.

Madison County Board of Supervisors

By: _____
Gerald Steen, President

CERTIFICATE AND DEDICATION OF OWNER STATE OF MISSISSIPPI COUNTY OF MADISON

I, Ken A. Primos, Jr., Vice-President of Hatheway Lake, LLC, a Mississippi Limited Liability Company, do hereby certify that the aforementioned is the owner of the land described in the foregoing certificate of Ronald C. McMaster, Jr., Professional Engineer and Surveyor, and that as Vice-President of said Hatheway Lake, LLC, have caused the same to be subdivided and plotted as shown hereon, and hereby adopt this plot of said subdivision as the free act and deed of said limited liability company and have designated the same as HATHEWAY LAKE PART 4.

All utilities, utility easements, and other easements are as designated and defined hereon.
All utilities, utility easements, streets, and street rights-of-way shall be dedicated for public use.

Witness my signature this the _____ day of _____, 2013.

HATHEWAY LAKE, LLC
A Mississippi Limited Liability Company

By: _____
Ken A. Primos, Jr., Vice-President

LEGAL DESCRIPTION

I, Ronald C. McMaster, Jr., Professional Engineer and Surveyor, do hereby certify that at the request of Hatheway Lake, LLC, the Owner, I have subdivided and plotted the following described land being situated in the NE 1/4 of Section 15, T8N-R1E, Madison County, Mississippi, as follows, to-wit:
A parcel or tract of land containing 11.9323 acres (519,772.99 square feet), more or less, lying and being situated in the NE 1/4 of Section 15, T8N-R1E, Madison County, Mississippi, being a part of the Hatheway Lake, LLC property as described in Deed Book 2819 at Page 313 of the Records of the Chancery Clerk of said Madison County at Canton, Mississippi and being more particularly described as follows:

COMMENCING at the NW corner of Section 15, T8N-R1E, Madison County, Mississippi, run thence:

South for a distance of 1335.20 feet; thence

East for a distance of 2153.17 feet; thence

South 53 degrees 39 minutes 04 seconds West for a distance of 143.50 feet; thence

South 36 degrees 37 minutes 50 seconds West for a distance of 372.99 feet; thence

South 35 degrees 00 minutes 49 seconds West for a distance of 230.98 feet; thence

South 45 degrees 09 minutes 27 seconds West for a distance of 371.98 feet; thence

South 44 degrees 55 minutes 04 seconds West for a distance of 195.60 feet; thence

South 36 degrees 06 minutes 20 seconds West for a distance of 101.51 feet; thence

South 18 degrees 39 minutes 31 seconds West for a distance of 165.36 feet; thence

South 20 degrees 20 minutes 30 seconds West for a distance of 143.06 feet; thence

South 03 degrees 19 minutes 44 seconds West for a distance of 177.38 feet; thence

South 04 degrees 15 minutes 25 seconds East for a distance of 193.00 feet; thence

South 01 degrees 58 minutes 37 seconds East for a distance of 258.80 feet; thence

South 08 degrees 50 minutes 19 seconds East for a distance of 175.48 feet; thence

South 35 degrees 44 minutes 43 seconds East for a distance of 96.50 feet; thence

South 43 degrees 40 minutes 59 seconds East for a distance of 152.71 feet to the Northerly Right-of-Way of Stribling Road; thence

North 63 degrees 28 minutes 52 seconds East along the Northerly Right-of-Way of said Stribling Road for a distance of 1749.26 feet to an iron pin, said point lying on the Easterly boundary of Hatheway Lake Part 1A, a subdivision on file in Plot Cabinet E at Slide 76-B of the Records of the Chancery Clerk of said Madison County at Canton, Mississippi; thence

Continue along the Northerly Right-of-Way of said Stribling Road to iron pins at each of the following calls:

North 63 degrees 28 minutes 52 seconds East for a distance of 3.18 feet; thence

921.49 feet along the arc of a 1367.46 foot radius curve to the right, said arc having a 904.15 foot chord which bears North 82 degrees 47 minutes 10 seconds East; thence

South 77 degrees 54 minutes 32 seconds East for a distance of 107.27 feet to an iron pin; thence

Continue, South 77 degrees 54 minutes 32 seconds East for a distance of 174.84 feet; thence

North 12 degrees 05 minutes 28 seconds East for a distance of 15.00 feet; thence

South 77 degrees 54 minutes 32 seconds East for a distance of 200.04 feet; thence

Leaving said Northerly Right-of-Way of said Stribling Road, run North 12 degrees 04 minutes 18 seconds East for a distance of 277.36 feet to an iron pin; thence

North 42 degrees 51 minutes 30 seconds West for a distance of 149.03 feet to an iron pin; thence

North 47 degrees 03 minutes 10 seconds East for a distance of 31.07 feet to an iron pin, said point being the SW corner of Lot 118 of Hatheway Lake, Phase 3, a subdivision on file in Plot Cabinet E at Slide 184-A of the Records of the Chancery Clerk of said Madison County at Canton, Mississippi; thence

North 42 degrees 56 minutes 50 seconds West along the westerly boundary of said Hatheway Lake, Phase 3 for a distance of 543.79 feet to the POINT OF BEGINNING of the herein described property; thence

South 47 degrees 03 minutes 10 seconds West for a distance of 55.99 feet to an iron pin; thence

South 58 degrees 06 minutes 03 seconds West for a distance of 104.97 feet; thence

South 69 degrees 35 minutes 48 seconds West for a distance of 165.59 feet; thence

South 80 degrees 43 minutes 37 seconds West for a distance of 106.23 feet; thence

South 87 degrees 36 minutes 52 seconds West for a distance of 56.46 feet; thence

North 87 degrees 15 minutes 07 seconds West for a distance of 72.69 feet; thence

North 78 degrees 15 minutes 47 seconds West for a distance of 50.29 feet; thence

North 67 degrees 47 minutes 30 seconds West for a distance of 82.26 feet; thence

North 55 degrees 01 minutes 14 seconds West for a distance of 83.28 feet; thence

North 69 degrees 42 minutes 48 seconds West for a distance of 85.68 feet; thence

North 75 degrees 25 minutes 39 seconds West for a distance of 107.61 feet; thence

North 69 degrees 39 minutes 29 seconds West for a distance of 28.50 feet; thence

North 40 degrees 00 minutes 17 seconds West for a distance of 36.71 feet; thence

North 28 degrees 39 minutes 07 seconds West for a distance of 124.08 feet; thence

North 13 degrees 27 minutes 43 seconds West for a distance of 33.81 feet; thence

North 05 degrees 11 minutes 33 seconds West for a distance of 113.19 feet; thence

North 08 degrees 47 minutes 39 seconds East for a distance of 45.53 feet; thence

North 36 degrees 01 minutes 13 seconds East for a distance of 74.11 feet; thence

North 41 degrees 27 minutes 43 seconds East for a distance of 70.44 feet; thence

North 39 degrees 20 minutes 39 seconds East for a distance of 85.00 feet; thence

North 39 degrees 16 minutes 06 seconds East for a distance of 295.32 feet to an iron pin; thence

South 89 degrees 44 minutes 16 seconds East for a distance of 14.23 feet to an iron pin, said point lying at the NW of Lot 157 of said Hatheway Lake, Phase 3; thence

South 42 degrees 56 minutes 50 seconds East for a distance of 987.82 feet to the POINT OF BEGINNING of the above described parcel or tract of land.

Witness my signature, this the _____ day of _____, 2013.

Ronald C. McMaster, Jr., Professional Surveyor,
Mississippi P.S. No. 3051